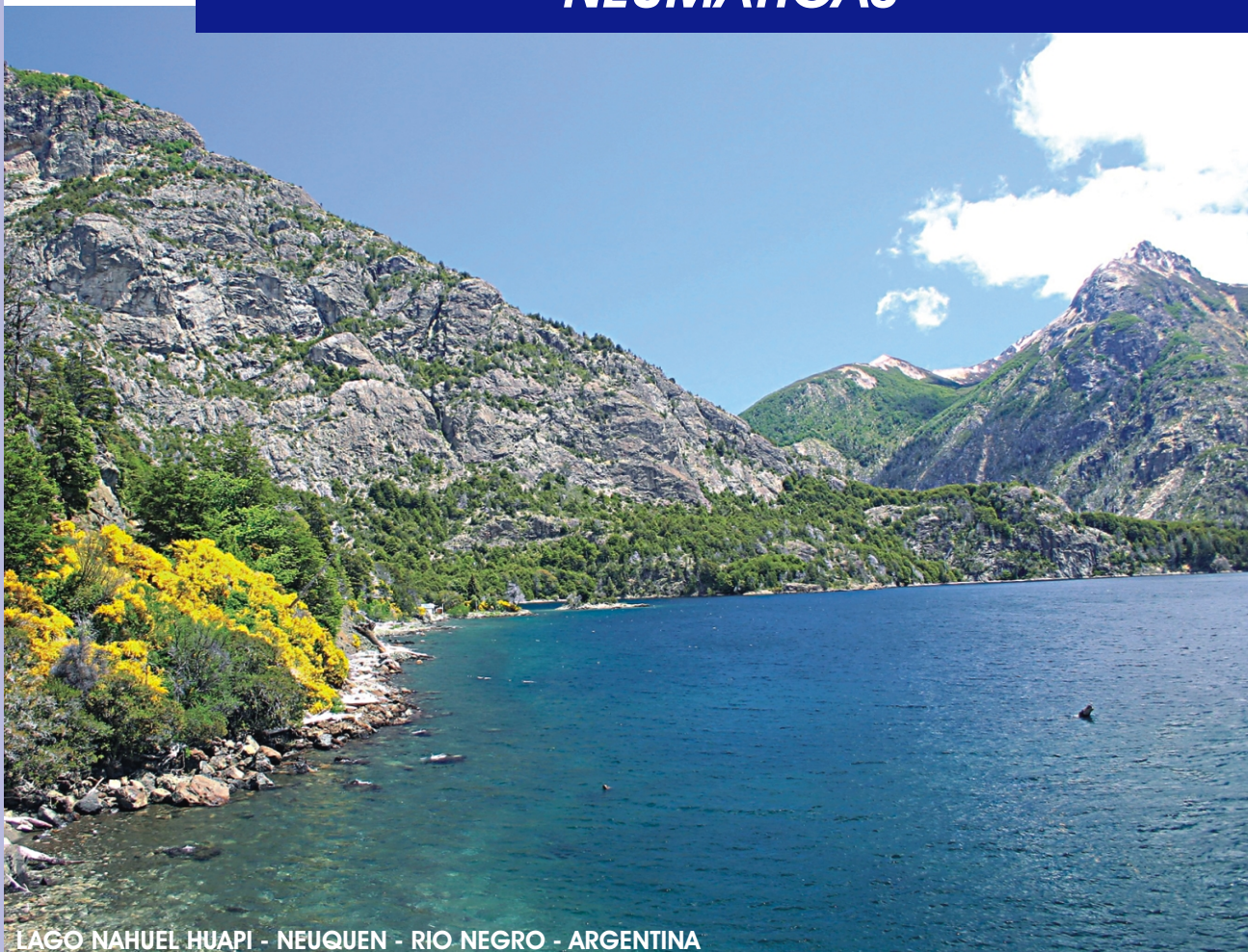




**Automación Argentina S.A.**

## **VÁLVULAS AUXILIARES NEUMÁTICAS**



LAGO NAHUEL HUAPI - NEUQUEN - RIO NEGRO - ARGENTINA

*Otro Aire...  
...Otra Energía*



**DATOS TÉCNICOS**

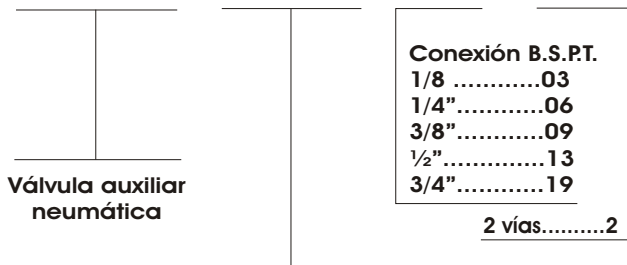


TIPO DE VÁLVULA:  
MATERIALES:  
  
TEMPERATURA DE  
FUNCIONAMIENTO:  
PRESIÓN DE TRABAJO:  
FLUIDO:  
POSICION DE TRABAJO:

Válvulas auxiliares neumáticas  
Cuerpo de aluminio, tornillo de registro de latón y  
guarniciones de NBR.  
  
DE -20 A 60 °C  
DE 0.5 A 10 Bar  
Aire Comprimido filtrado y lubricado  
indiferente

**REGULADOR DE CAUDAL UNIDIRECCIONAL**

VAN - 351 - XX - 2

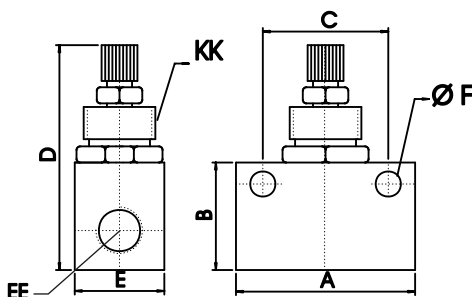
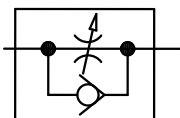


Válvula auxiliar  
neumática

Conexión B.S.P.T.  
1/8" .....03  
1/4" .....06  
3/8" .....09  
1/2" .....13  
3/4" .....19

2 vías.....2

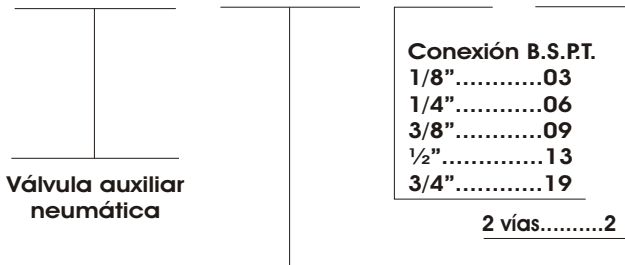
Regulador de caudal unidireccional:



EE	A	B	C	D	E	F	KK
1/8"	32	22	23	47	16	4,5	M12x1
1/4"	50	20	35	63	25	7	M20x1,5
3/8"	50	30	35	63	25	7	M20x1,5
1/2"	65	46	45	85,5	32	7	M20x1
3/4"	78,5	50	58,5	89,5	38	7	M20X1

**REGULADOR DE CAUDAL BIDIRECCIONAL**

VAN - 352 - XX - 2

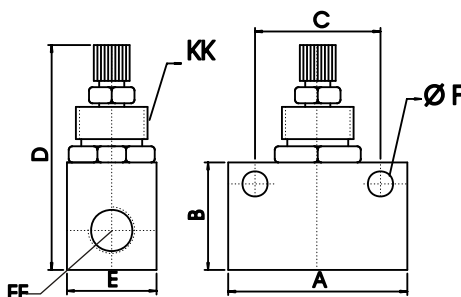
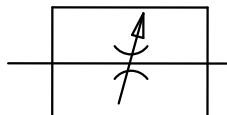


Válvula auxiliar  
neumática

Conexión B.S.P.T.  
1/8" .....03  
1/4" .....06  
3/8" .....09  
1/2" .....13  
3/4" .....19

2 vías.....2

Regulador de caudal bidireccional:  
Caudal controlado en ambos sentidos

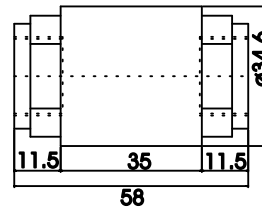
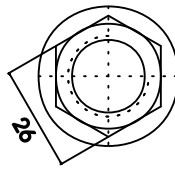
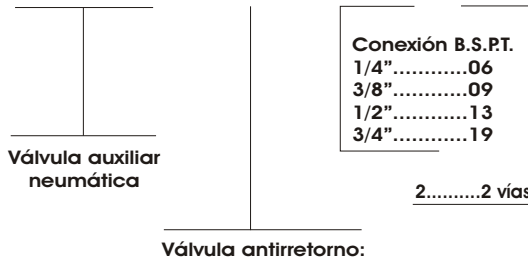


EE	A	B	C	D	E	F	KK
1/8"	32	22	23	47	16	4,5	M12x1
1/4"	50	20	35	63	25	7	M20x1,5
3/8"	50	30	35	63	25	7	M20x1,5
1/2"	65	46	45	85,5	32	7	M20x1
3/4"	78,5	50	58,5	89,5	38	7	M20X1



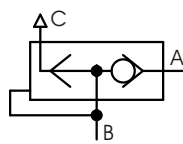
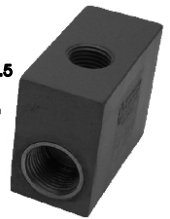
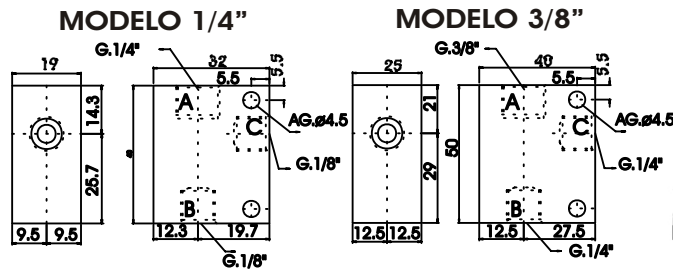
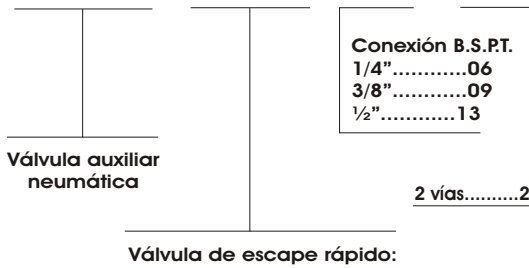
## VÁLVULAS ANTIRRETORNO

VAN - 353 - XX - 2

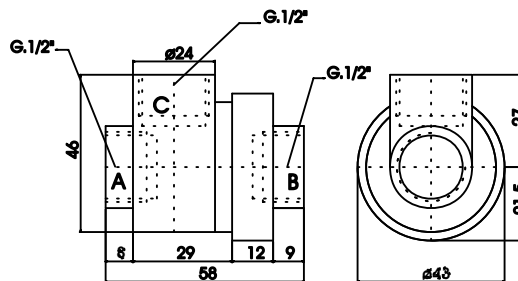


## VÁLVULAS DE ESCAPE RÁPIDO

VAN - 354 - XX - 2

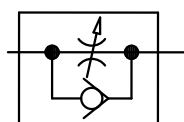
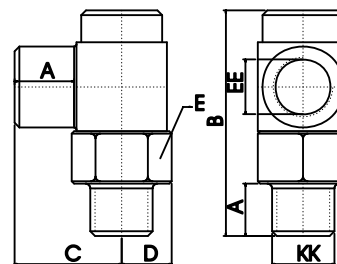
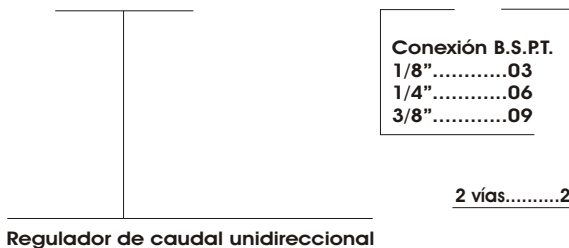


MODELO 1/2"



## REGULADOR DE CAUDAL UNIDIRECCIONAL (acodado)

VCA - 100 - XX - 2

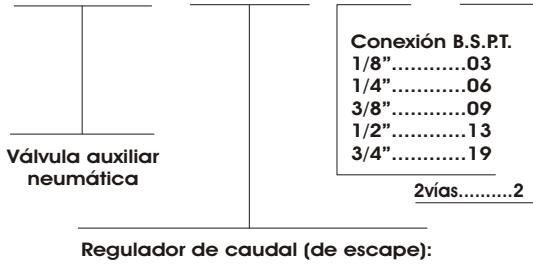


	EE	A	B	C	D	E	KK
1/8"	8	37,5	18	9	15,8	1/8"	
1/4"	11	47	22,5	11	19	1/4"	
3/8"	15	65	39	14,5	25,4	1/2"	

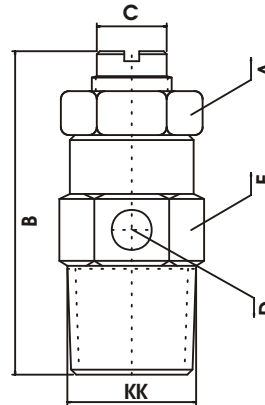


**REGULADOR DE CAUDAL (de escape)**

VAN - 155 - XX - 2

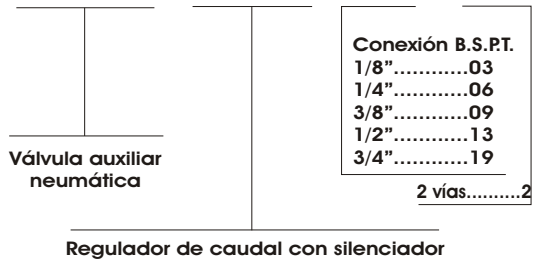


KK BSPT	A	B	C	D	E
1/8	9.5	20	5	2.5	12.7
1/4	12.7	23	7	4	12.7
3/8	19	26	8.5	5	19
1/2	19	31	12	6	22.2
3/4	19	32	12	6	31.75

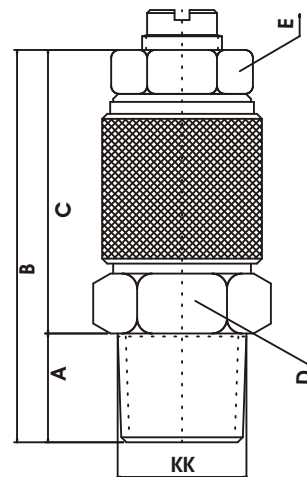


**REGULADOR DE CAUDAL CON SILENCIADOR (de escape)**

VAN - 156 - XX - 2

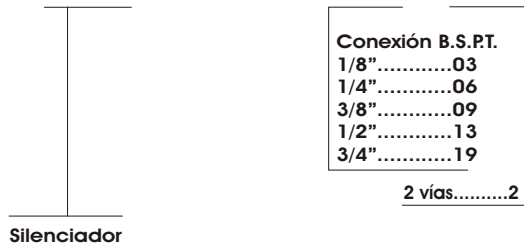


KK BSPT	A	B	C	D	E
1/8	10	32	22	12.7	9.5
1/4	11	35	24	15.8	12.7
3/8	14	48	27	19	14.2
1/2	15	54	39	28.5	19
3/4	20	59	39	31.75	19

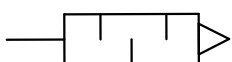
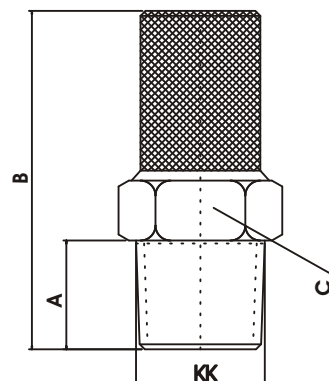


**SILENCIADOR**

SS - 100 - XX - 2



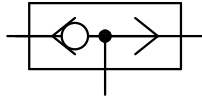
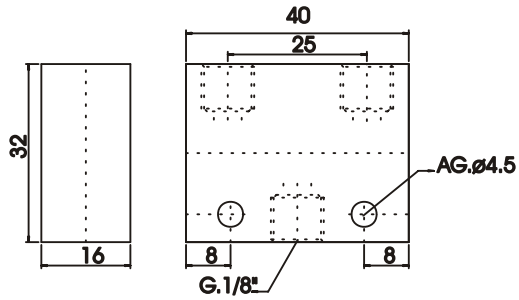
KK BSPT	A	B	C
1/8	9	31	14.2
1/4	9	31	14.2
3/8	10	53	22.2
1/2	12	55	22.2
3/4	15	67.5	28.5





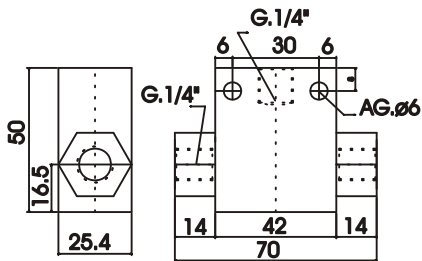
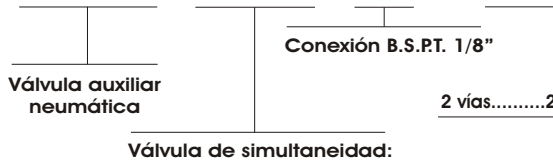
## VÁLVULA SELECTORA DE CIRCUITO FUNCIÓN "O"

VAN - 356 - XX - 2



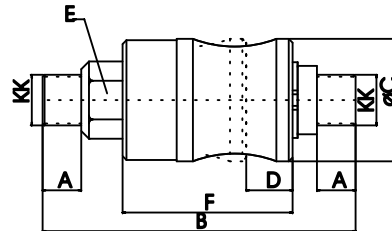
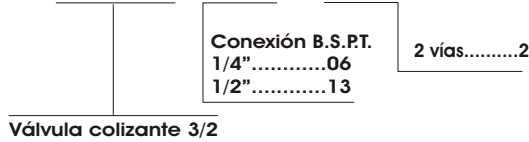
## VÁLVULAS DE SIMULTANEIDAD FUNCIÓN "Y"

VAN - 357 - XX - 2



## VÁLVULA COLIZANTE 3/2

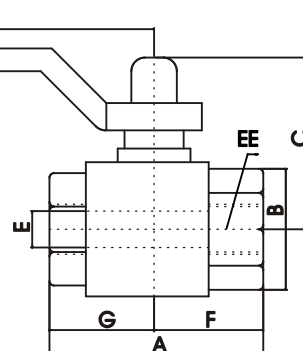
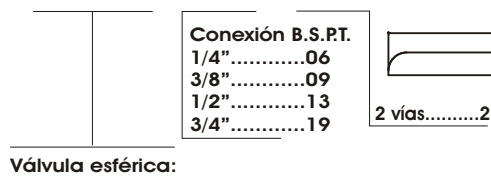
VC - XX - 2



KK	A	B	C	D	E	F
1/4"	10	81	31,7	12	19	44
1/2"	15	120	44	22,5	25,4	67

## VÁLVULA ESFÉRICA PARA USO NEUMÁTICO E HIDRÁULICO

VE - XX - 2



EE	A	B	C	D	E	F	G
1/4"	44,4	23,5	37	80	10	22,2	22,2
3/8"	44,4	24	37	80	10	22,2	22,2
1/2"	50,5	30,5	41	80	15	25	25,5
3/4"	57,5	37	55	113	20	28	29,5